

**KD-Validated Anti-ECI1 Rabbit Monoclonal Antibody**  
**Rabbit monoclonal antibody**  
**Catalog # AGI2250****Specification****KD-Validated Anti-ECI1 Rabbit Monoclonal Antibody - Product Information**

Application	WB
Primary Accession	<a href="#">P42126</a>
Reactivity	Rat, Human, Mouse
Clonality	Monoclonal
Isotype	Rabbit IgG
Calculated MW	Predicted, 33 kDa; observed, 28 kDa kDa
Gene Name	ECI1
Aliases	ECI1; Enoyl-CoA Delta Isomerase 1; DCI; Dodecenoyl-Coenzyme A Delta Isomerase (3,2 Trans-Enoyl-Coenzyme A Isomerase); Enoyl-CoA Delta Isomerase 1, Mitochondrial; Delta(3),Delta(2)-Enoyl-CoA Isomerase; D3,D2-Enoyl-CoA Isomerase; Dodecenoyl-CoA Isomerase; Dodecenoyl-CoA Delta Isomerase (3,2 Trans-Enoyl-CoA Isomerase); 3,2-Trans-Enoyl-CoA Isomerase, Mitochondrial; Epididymis Secretory Sperm Binding Protein; 3,2 Trans-Enoyl-Coenzyme A Isomerase; 3,2 Trans-Enoyl-CoA Isomerase; 3,2-Trans-Enoyl-CoA Isomerase; Acetylene-Allene Isomerase; EC 5.3.3.8
Immunogen	A synthesized peptide derived from human ECI1

**KD-Validated Anti-ECI1 Rabbit Monoclonal Antibody - Additional Information**

Gene ID	1632
<b>Other Names</b>	Enoyl-CoA delta isomerase 1, mitochondrial, 5.3.3.8, 3, 2-trans-enoil-CoA isomerase, Delta(3), Delta(2)-enoil-CoA isomerase, D3, D2-enoil-CoA isomerase, Dodecenoyl-CoA isomerase, ECI1, DCI

**KD-Validated Anti-ECI1 Rabbit Monoclonal Antibody - Protein Information****Name** ECI1**Synonyms** DCI**Function**

Key enzyme of fatty acid beta-oxidation (Probable). Able to isomerize both 3-cis (3Z) and 3-trans (3E) double bonds into the 2- trans (2E) form in a range of enoyl-CoA species, with a preference for (3Z)-enoyl-CoAs over (3E)-enoyl-CoAs (By similarity) (PubMed:<a

href="http://www.uniprot.org/citations/7818490" target="\_blank">7818490</a>). The catalytic efficiency of this enzyme is not affected by the fatty acyl chain length (By similarity).

#### Cellular Location

Mitochondrion matrix {ECO:0000250|UniProtKB:P23965}

#### Tissue Location

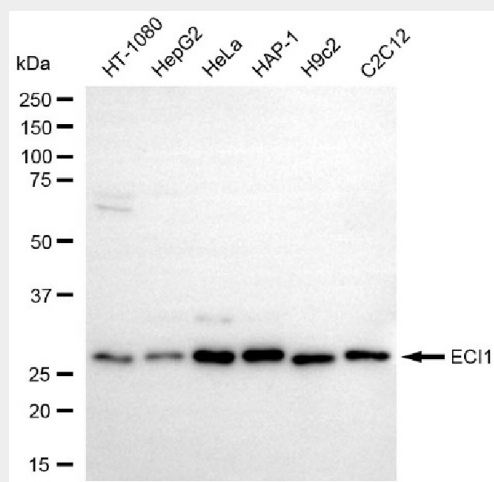
Expressed in liver (at protein level).

### KD-Validated Anti-ECI1 Rabbit Monoclonal Antibody - Protocols

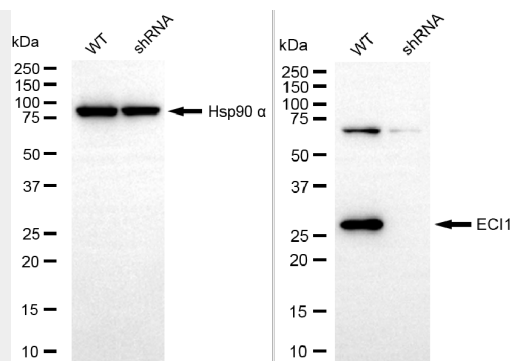
Provided below are standard protocols that you may find useful for product applications.

- [Western Blot](#)
- [Blocking Peptides](#)
- [Dot Blot](#)
- [Immunohistochemistry](#)
- [Immunofluorescence](#)
- [Immunoprecipitation](#)
- [Flow Cytometry](#)
- [Cell Culture](#)

### KD-Validated Anti-ECI1 Rabbit Monoclonal Antibody - Images



Western blotting analysis using anti-ECI1 antibody (Cat#AGI2250). Total cell lysates (30 µg) from various cell lines were loaded and separated by SDS-PAGE. The blot was incubated with anti-ECI1 antibody (Cat#AGI2250, 1:5,000) and HRP-conjugated goat anti-rabbit secondary antibody respectively.



Copyright ©2025 Genuin Biotechnologies LLC

Western blotting analysis using anti-ECI1 antibody (Cat#AGI2250). ECI1 expression in wild-type (WT) and ECI1 shRNA knockdown (KD) HeLa cells with 20 µg of total cell lysates. Hsp90 α serves as a loading control. The blot was incubated with anti-ECI1 antibody (Cat#AGI2250, 1:5,000) and HRP-conjugated goat anti-rabbit secondary antibody respectively.